

**SPECIAL ISSUE**

*Machakos County Supplementary Appropriation No. 7 (Acts No. 7)*

---



REPUBLIC OF KENYA

---

**MACHAKOS COUNTY GAZETTE  
SUPPLEMENT**

**ACTS, 2015**

---

---

**NAIROBI, 4th May, 2015**

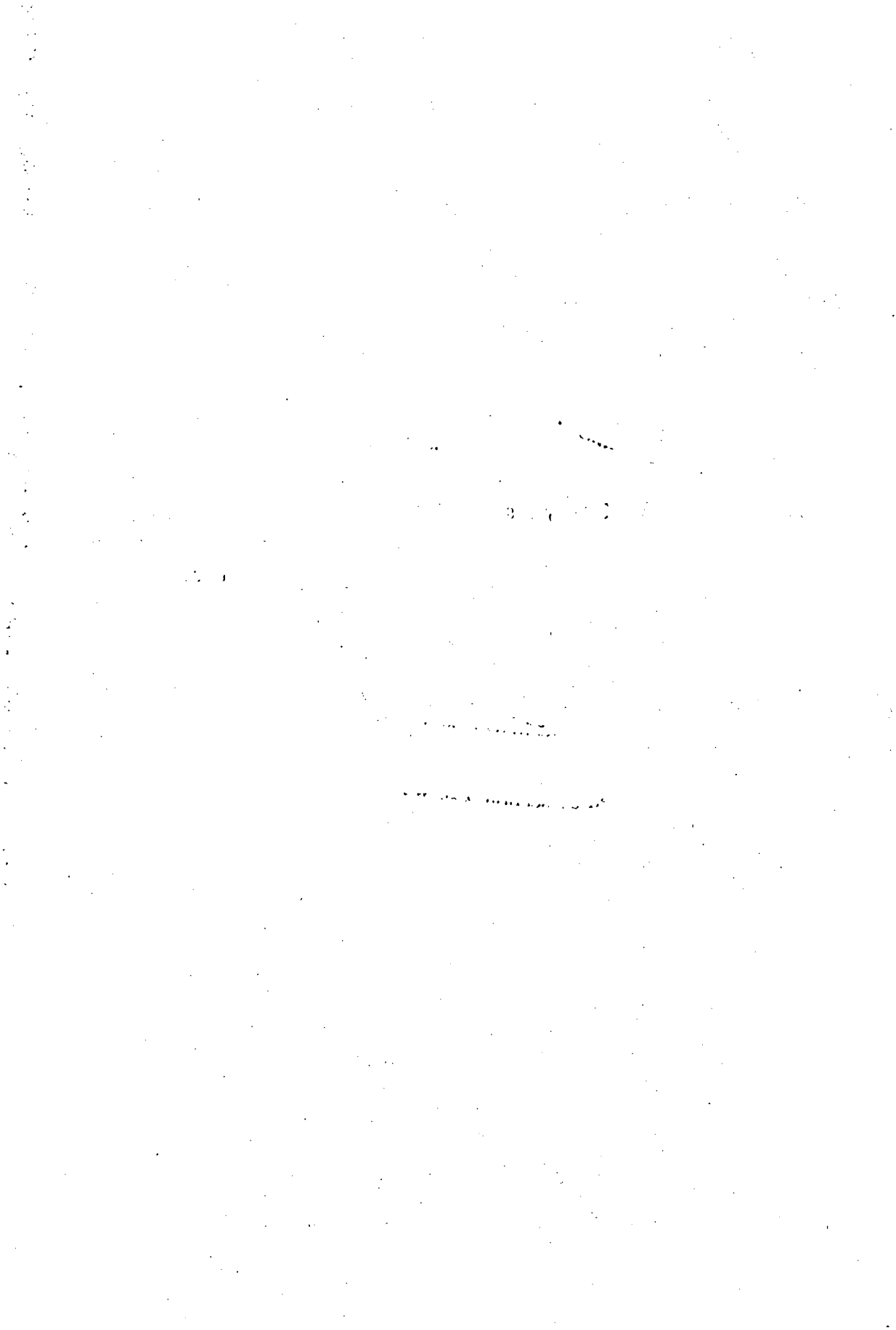
---

---

CONTENT

Act—	PAGE
The Machakos County Supplementary Appropriation Act, 2015 .....	1

NATIONAL COUNCIL FOR  
LAW REPORTING  
LIBRARY



**THE MACHAKOS COUNTY  
SUPPLEMENTARY APPROPRIATION ACT, 2015**

*Date of Assent: 29th April, 2015*

*Date of Commencement: 7th May, 2015*

**AN ACT of County Assembly of Machakos to authorize the issue of a sum of money out of the Machakos County Revenue Fund and its application towards the services of the year ending 30th June, 2015 and to appropriate that sum for certain public services and purposes.**

**ENACTED** by the County Assembly of Machakos, as follows—

1. This Act may be cited as the Machakos County Supplementary Appropriation Act, 2015

Short title

2. The County Treasury may issue out of the County Revenue Fund and apply towards the supply granted for the services of the year ending on the 30<sup>th</sup> June, 2015, the sum of Kenya shillings 362,848,822 and apply it towards the supply granted.

Issue of ksh 362,848,822 out of the County Revenue Fund for the service of the year 30<sup>th</sup> June, 2015

3. The sum granted by section 2 shall be appropriated for several services and purposes specified in the second column of the first schedule in amounts specified in the third column of that schedule

Appropriation of the sum of money granted

<b>FIRST SCHEDULE SECTION 2 AND 3</b>			
<b>(1)</b>	<b>(2)</b>	<b>(3)</b>	
<b>Portfolio Code</b>	<b>Service or Purpose</b>	<b>Development</b>	<b>Recurrent</b>
		<b>Increase/ Decrease</b>	<b>Increase/ Decrease</b>
		<b>KSh.</b>	<b>KSh.</b>
1	The amount required in the year ending 30th June, 2015 for Co-ordination and Supervisory Services of County Executive portfolio.....	0	101,030,700
2	The amount required in the year ending 30th June, 2015 for General Administration and Support Services, and Public Financial Management of Finance and Revenue Collection portfolio.....	-27,323,420	9,682,480
3	The amount required in the year ending 30th June, 2015 for General Administration and Support Services, ICT Infrastructure, Information and Communication Services, and Human Resource Management and Development of Public Service, Labour and Information Communication & Technology portfolio...	124,481,407	-75,917,025
4	The amount required in the year ending 30th June, 2015 for General Administration and Support Services, Road Maintenance and Management, County Transport and Management and Infrastructure Development, Housing Development and Human Settlement, and County Government Buildings of Transport, Roads, Public Works and Housing portfolio.....	15,267,472	-185,125,907
5	The amount required in the year ending 30th June, 2015 for General Administration and Planning, Preventive and Promotive Health services, and Curative Health Services of Health and Emergency Services portfolio.....	1,828,309	508,573,623

---

**FIRST SCHEDULE SECTION 2 AND 3**


---

(1)	(2)	(3)	
Portfolio Code	Service or Purpose	Development	Recurrent
		Increase/ Decrease	Increase/ Decrease
		KSh.	KSh.
6	The amount required in the year ending 30th June, 2015 for General Administration and Planning, Water Supply and Sewerage, and Water Resources and Storage Management of Water, Irrigation and Sanitation portfolio.	290,138,026	-76,145,720
7	The amount required in the year ending 30th June, 2015 for General Administration and Support services, Crop Development and Management, Livestock Resources management and Development, Fisheries Development, Veterinary services, Cooperative Development and Management, and Cooperative Marketing of Agriculture, Livestock and Cooperative Development portfolio.....	-72,794,771	-91,722,872
8	The amount required in the year ending 30th June, 2015 for General Administration and Planning, National Heritage and Culture, Management and Development of Sports and Sports Facilities, Campaign against Drug Abuse, Tourism Development and Marketing, and entertainment of Tourism and Culture portfolio.....	84,786,881	-17,735,721
9	The amount required in the year ending 30th June, 2015 for General Administration and Support Services, Management of Security services, and Administration and Field Services of Decentralized Units, Urban Areas and Municipalities portfolio.....	-33,049,478	149,434,660

---

**FIRST SCHEDULE SECTION 2 AND 3**


---

(1)	(2)	(3)	
Portfolio Code	Service or Purpose	Development	Recurrent
		Increase/ Decrease	Increase/ Decrease
		KSh.	KSh.
10	The amount required in the year ending 30th June, 2015 for General Administration and Support Services, Basic Education, Youth Development Services, and Gender and Social Development of Education Youth and Social Welfare portfolio.....	-24,068,063	-24,811,437
11	The amount required in the year ending 30th June, 2015 for General Administration and Planning, Land Policy and Planning, Environmental Management and Protection, and County Electrification of Land Energy Environment and Natural Resources portfolio.....	23,656,284	-18,863,215
12	The amount required in the year ending 30th June, 2015 for General Administration and Support Services, County Economic Policy and Planning, and Policy Research and Statistical Services of Trade Economic Planning and Industrialization portfolio.....	-110,157,000	-46,264,156
13	The amount required in the year ending 30th June, 2015 for Legislation and Oversight of County Assembly portfolio.....	84,666,559	-224,666,559
14	The amount required in the year ending 30th June, 2015 for Administration of Human Resources in Public Service of County Public Service Board portfolio.....	5,416,616	-7,468,851
<b>TOTAL KSh.</b>		<b>362,848,822</b>	<b>0</b>

---



